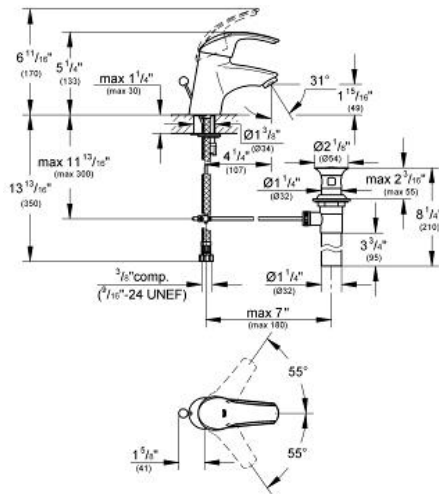


EUROSMART  
Lavatory Centerset  
S-Size

MODEL # 32642001

GROHE America, Inc | 200 North Gary Avenue, Suite G, Roselle, IL 60172  
Phone: +1 (800) 444-7643 | Fax: +1 (800) 225-2778 | us-customerservice@grohe.com

Pure Freude an Wasser



**Product Description:**  
Lavatory Centerset  
S-Size

**Standard Specification:**

- Single hole installation
- GROHE SilkMove 35 mm ceramic cartridge
- GROHE StarLight® finish
- Adjustable flow rate limiter
- Flow control
- 1 1/4" pop-up waste set
- Stainless steel flex lines
- Quick installation system
- Max Flow Rate: 1.5 gpm (5.7 L/min)

**Applicable Codes & Standards:**

- Energy Policy Act of 1992
- NSF 61
- ASME A112.18.1/CSA B125.1
- US Federal and State material regulations
- EPA WaterSense®
- ICC/ANSI A117.1
- CalGreen

**Color:**

- 32642001 001 chrome